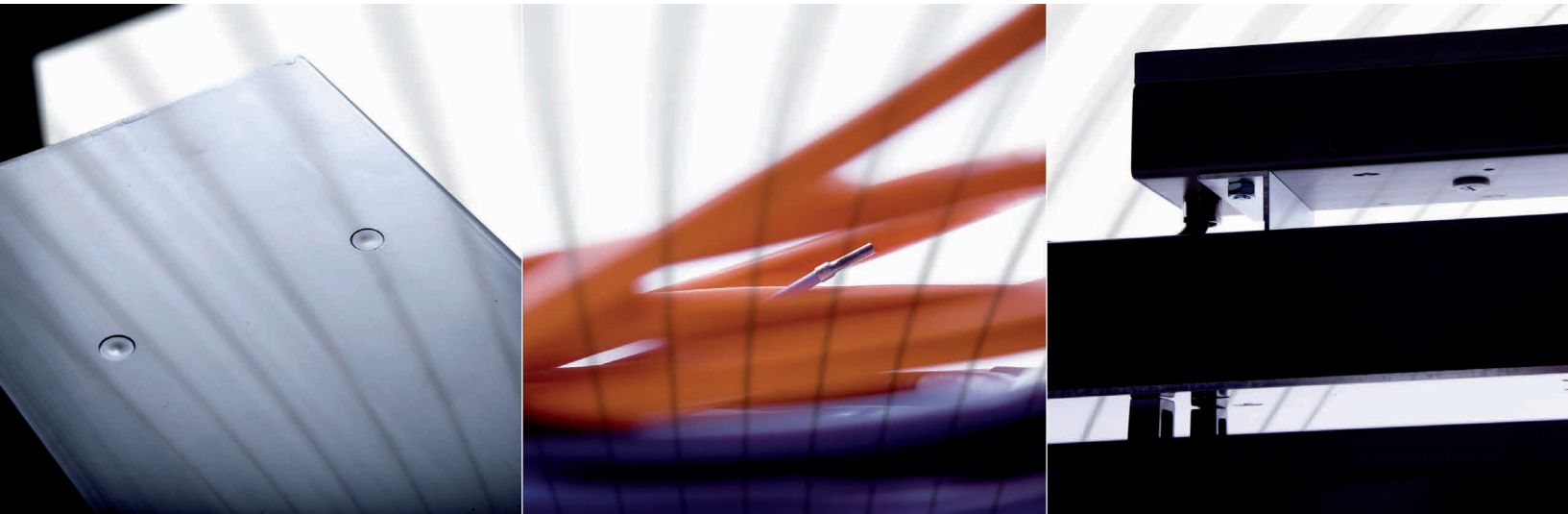


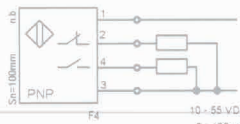
Inductive Surface Sensors



with Proxi-Teach™
teaching function



Proxitron CE
www.proxitron.de



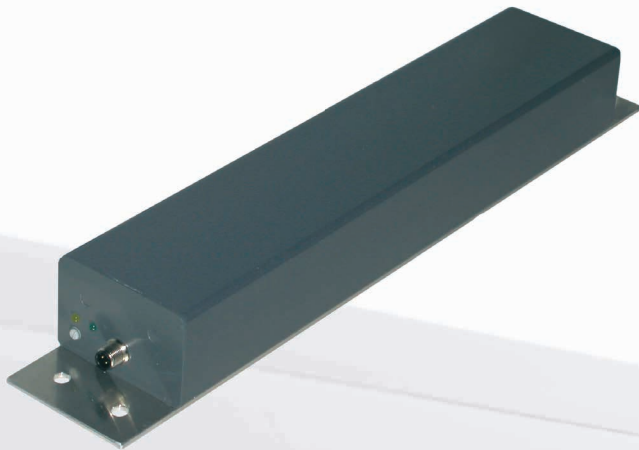
Proximity switch for monitoring
of roller paths and conveyor tracks

- Monitoring of roller paths and conveyor tracks
- Detection of metals, e.g. tubes, profiles, bands
- Large sensing distance, depending on object size
- Simple adaptation to every width of roller path
- Single sensor controls the roller path drive as a replacement for a row of many sensors

Sensor width 86 mm

smaller models see also brochure P18E Sensor Strips

IKU 3



Sensor length L (mm)

	Type	Sn (mm)	Target plate (mm)
200	IKU 321	80	200 x 100
250	IKU 325	80	250 x 100
300	IKU 331	80	300 x 100
350	IKU 335	80	350 x 100
400	IKU 341	80	400 x 100
450	IKU 345	80	450 x 100
500	IKU 351	80	500 x 100
550	IKU 355	80	550 x 100
600	IKU 361	80	600 x 100
650			
700			
750			
800			
850			
900			
950			
1000			

Sensor width 100 mm

IKU 1



Sensor length L (mm)

	Type	Sn (mm)	Target plate (mm)
200			
250			
300	IKU 131	100	300 x 250
350	IKU 135	110	450 x 250
400	IKU 141	120	500 x 250
450	IKU 145	130	550 x 250
500	IKU 151	140	600 x 250
550	IKU 155	150	650 x 250
600	IKU 161	160	700 x 250
650	IKU 165	160	750 x 250
700	IKU 171	160	800 x 250
750			
800			
850			
900			
950			
1000			

Inductive Surface Sensors

IKU 8 / IKU 2

- Self-calibration at the push of a button with Proxi-Teach™ (replaces adjustment by potentiometer without extra costs)
- Installation in a row without problems using frequency offset versions
- Connection via plug or cable versions
- Supply voltage DC 3/4-wire 10 - 55 V or AC/DC 2-wire 20 - 260 V

Sensor width 140 mm

IKU 8



Sensor length L (mm)

	Type	Sn (mm)	Target plate (mm)
200			
250	IKU 825	130	450 x 350
300	IKU 831	140	500 x 350
350	IKU 835	150	550 x 350
400	IKU 841	160	600 x 350
450	IKU 845	170	650 x 350
500	IKU 851	180	700 x 350
550	IKU 855	190	750 x 350
600	IKU 861	200	800 x 350
650	IKU 865	210	850 x 350
700	IKU 871	220	900 x 350
750	IKU 875	230	950 x 350
800	IKU 881	240	1000 x 350
850	IKU 885	240	1050 x 350
900	IKU 891	240	1100 x 350
950	IKU 895	240	1150 x 350
1000	IKU 8101	240	1200 x 350

Sensor width 200 mm

IKU 2

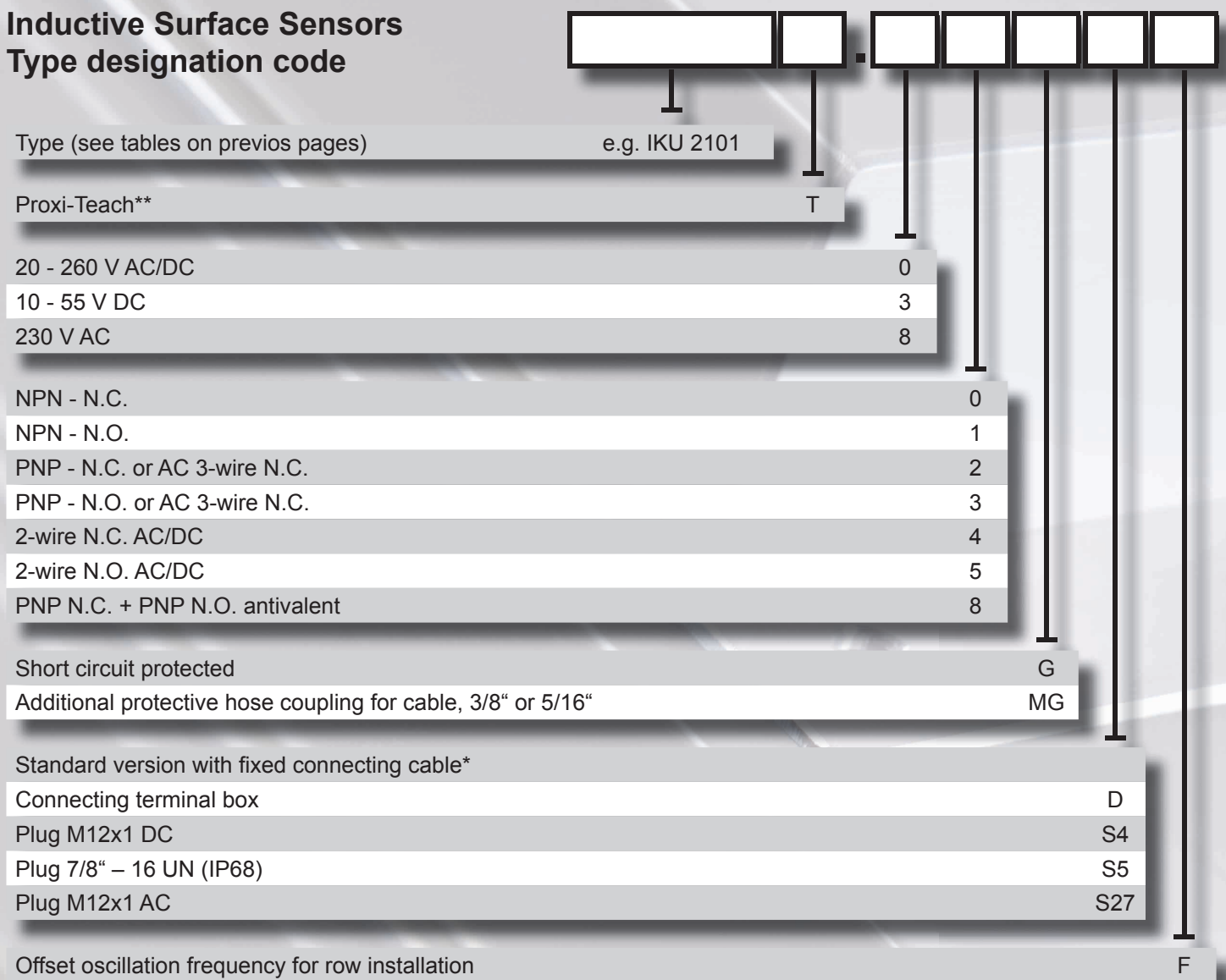


Sensor length L (mm)

	Type	Sn (mm)	Target plate (mm)
200	IKU 221	130	390 x 390
250	IKU 225	145	435 x 435
300	IKU 231	160	480 x 480
350	IKU 235	175	525 x 525
400	IKU 241	190	570 x 570
450	IKU 245	205	650 x 600
500	IKU 251	220	700 x 600
550	IKU 255	235	750 x 600
600	IKU 261	250	800 x 600
650	IKU 265	250	850 x 600
700	IKU 271	250	900 x 600
750	IKU 275	250	950 x 600
800	IKU 281	250	1000 x 600
850	IKU 285	250	1050 x 600
900	IKU 291	250	1100 x 600
950	IKU 295	250	1150 x 600
1000	IKU 2101	250	1200 x 600

Inductive Surface Sensors

Type designation code



*Connecting cables are available in different lengths and materials. Please, tell us your requirements. We will be pleased to advise you.

** Inductive surface sensors with Proxi-Teach recognise the existing installation conditions after one key is pressed and adjust the operating distance optimally. This enables safety operation under non-standard installation conditions. The effort upon startup is minimized.

